

The header features the Mehra Foundation logo with the text "Tara Vati Ram Gopal mehra foundation". A "Home" button is visible. Below the logo is a banner for "Dan et Carole's Project" featuring a photo of a couple. A navigation menu includes: About Us, Activities, Healthcare, Education, Funding Requirements, Make a Contribution, and Contact Us. There are also images of a child reading, stacks of money, and a group of children.



Dan et Carole

## Invitation to participate in our project

**Chers amis,**

Il est inusuel d'évoquer la liste de mariage dans une invitation. Cependant, si nous prenons la liberté de le faire, c'est que, n'ayant pas d'autre réel besoin que celui de votre amitié, nous avons tenté d'imaginer une alternative moins coutumière.

Notre plaisir est d'organiser notre mariage et de vous avoir parmi nous. Notre chance est de pouvoir le faire. A cette occasion, si nous devons avoir un souhait, il serait lié à une action de bienfaisance ; motivé non pas par la charité ou la compassion, mais plutôt par le sens d'un devoir civique, voire talmudique, de contribution à la collectivité. La vie nous a donné beaucoup ; charge à nous, en service de cette dette, d'alléger la souffrance de quelques-uns.

Toutes les causes valent bien sûr la peine d'être soutenues. Toutefois, nous avons tenu à créer un projet spécifique, qui nous est cher, et qui permette à nos proches, s'ils le désirent, de fêter notre union en nous aidant à accomplir notre tâche.

Ce projet nous l'avons élaboré avec des amis

**Dear Friends,**

It is unusual to mention one's wedding list in an invitation. However, if we take the liberty to do so, it is because, having no other true need than that of your friendship, we have endeavoured to imagine a less customary alternative.

It is our pleasure to organise our wedding and to welcome you. It is our good fortune to be capable to do this. On this occasion, if we have an aspiration, it is one related to goodwill. Motivated neither by charity, nor by compassion, but rather by the sense of civic, indeed Talmudic duty, to contribute to the human collective. Life has given us in abundance, leaving us with the obligation, in service to this debt, to do what little we can to ease the suffering of others.

Numerous causes are obviously worthy of support. On occasion of our marriage however, we have chosen to create a specific project, dear to our hearts and that would permit those who we love, to assist us in fulfilling this task in honour to our union.

We have elaborated this project with friends

dont nous avons visité la fondation, The Tara Vati Ram Gopal Mehra Foundation, et qui vouent une part importante de leur temps et de leur argent à créer écoles et dispensaires pour des personnes défavorisées.

whose foundation The Tara Vati Ram Gopal Mehra Foundation, we have visited, and who dedicate a significant portion of their time and earnings to the creation of schools and medical dispensaries for the less fortunate.

### **The Tara Vati Ram Gopal Mehra Foundation**

La fondation a établi un centre médical d'environ 1,100 m<sup>2</sup> sur 3 étages dans un quartier peuplé de New Delhi. Elle gère également deux dispensaires homéopathiques gratuits. A l'heure actuelle, le centre médical offre des soins ambulatoires incluant de la physiothérapie, des radios, des ultrasons, des échographies, un laboratoire de pathologie et une clinique ophtalmologique. Le centre comporte des médecins spécialisés dans différents domaines et fournit une aide à la planification familiale. 80 à 120 patients y sont traités chaque jour.

### **The Tara Vati Ram Gopal Mehra Foundation**

The Foundation has set up a charitable Medical Centre in a densely populated neighbourhood of New Delhi, covering about 11,000 sq. ft on three floors. It also runs two Free Homeopathic Dispensaries. Currently the Medical Centre offers a charitable outpatient facility supported by Physiotherapy, X-Ray, Ultra Sound, ECG, Pathology laboratory services and an Ophthalmology Clinic. The Centre is visited regularly by consultants in several fields of medicine, and also conducts regular family planning activity, serving between 80-120 patients daily.

La fondation a également créé une école primaire au centre de New Delhi, The Nirmal Primary School, où 450 enfants sont pris en charge. L'école offre aussi des classes de couturières et d'esthéticiennes à des femmes désireuses d'apprendre un métier. Avec l'aide d'une autre fondation, une formation pratique d'accès à l'informatique y est donnée à 200 élèves grâce à une dizaine d'ordinateurs.

In addition, the Foundation provides primary education through its support of the Nirmal Primary School - located in the heart of New Delhi. The school educates about 450 students, from Nursery to Class V, and also offers Vocational Training classes for Sewing and Stitching; and Beautician Assistants. Through the assistance of another Foundation, Computer Education is also offered, with 10 computers available for hands-on training for about 200 students enrolled in the classes.

### **Le projet**

Dans le centre médical, les soins sont donnés à l'heure actuelle sur deux étages. Notre projet est d'équiper le troisième d'un centre opératoire ambulatoire comprenant : une salle d'opération à air conditionné, une salle de réveil de 9 lits, une salle de préparation pour les médecins et une salle préopératoire. Les équipements, aussi complets que possible, comprendront des appareils d'assistance respiratoire ainsi qu'une unité de stérilisation. Un ascenseur est également prévu afin de monter les malades. A un stade ultérieur, un service d'ambulance est envisagé.

### **The Project**

At present patients receive medical attention on the ground floor and in the basement, as the first floor of the centre is still to be equipped. Our project is to equip and furnish the available 3,500 sq. ft. on the first floor of the centre as a Surgical Facility comprising an air-conditioned Operation Theatre, Recovery Room with 9 beds, Doctor's preparation Room, Patient Pre-operative Room with all requisite equipment and instruments, including Oxygen Manifold and an Instrument Sterilization Facility. For patients to reach the first floor, an elevator system will be installed. In a later step, if feasible, an ambulance service would also be introduced.

Nous nous réjouissons de vous voir au mariage !

Look forward to seeing you at the wedding !

[Carole et Dan](#)

[Carole and Dan](#)

**For additional details on the Surgical Floor**

[For additional details on the Surgical Floor Project, click here](#)

 [Download PDF file of the project](#)

**Additional details** on the current activities and future plans of the Mehra Foundation can be found on the [Healthcare](#) and [Education](#) pages. We would like to urge you to spend time on the website.

**To facilitate collections of your gifts/contributions**, we have made arrangements with the following financial institution:



Selvi & Cie SA  
4 Rue du Grutli  
CH-1204 Genève

**A) By Postal Transfer :**

**Postal Account :** CCP 12-11177-5  
**Beneficiary :** Selvi & Cie SA  
4 Rue du Grutli  
CH-1204 Genève  
**Reference :** "Mehra Foundation"  
(!important!)

**B) By Bank Transfer :**

**Bank :** Lloyds TSB Bank  
1 Place Bel Air  
Genève  
**Swift :** LOYD CH GG  
**In favor of :** Selvi & Cie SA  
4 Rue du Grutli  
CH-1204 Genève  
(Swift SELV CH GG)  
**Account :** 170917  
**Reference :** "Mehra Foundation"  
(!important!)

 [Download online brochure](#)

[Back to top](#)

The "Mehra Foundation" Web site project was funded by WebFuturz Net Pvt. Ltd.  
Visit [webfuturz.net](http://webfuturz.net)

# **TARA VATI RAM GOPAL MEHRA FOUNDATION MEDICAL CENTRE SURGICAL FLOOR PROJECT**

## **PROJECT REPORT SECTIONS**

- |                                   |                                      |
|-----------------------------------|--------------------------------------|
| <b>1. <u>OBJECTIVE</u></b>        | <b>5. <u>EQUIPMENT</u></b>           |
| <b>2. <u>BROAD GUIDELINES</u></b> | <b>6. <u>FUNDING REQUIREMENT</u></b> |
| <b>3. <u>STAFFING</u></b>         | <b>7. <u>PHOTOGRAPHS</u></b>         |
| <b>4. <u>CIVIL WORKS</u></b>      | <b>8. <u>FLOOR PLAN</u></b>          |
- 

### **OBJECTIVE:**

With the basement and the ground floor being used for medical consultation and diagnostic act floor is to be dedicated to Surgery.

[Back to top](#)

---

### **BROAD GUIDELINES:**

The times at which the surgical procedures will be conducted, and their scope, will be such that patients go home before the Medical Centre closes for the day. The types of operations to be carried out will include:

#### **1. Ophthalmologic operations like:**

- Cataract surgery and Intra Ocular lenses implants (perhaps Phacko)
- Glaucoma
- Squint
- Chalazian; Pteryguin; Entropion/Ectropion; Syringe probing etc.

#### **2. Simple Orthopaedic procedures like:**

- Debridement
- Finger and toe injuries
- Small cyst and Liponia excision
- Digit Amputations
- Plasters

#### **3. Simple Gynaecology procedures (but not including deliveries) like:**

- D & C
- Pap Smear
- Endometrial Biopsy

#### **4. Family Planning procedures like:**

- Multi load Cu T
- Ligation & MTP (Laparoscopy Abdominal ligation)
- Diagnostic Laparoscopy

## 5. General Surgical Procedures like:

- Hydrocele
- Phimosis
- Hernia
- Fibroadenoma
- Breast Lump
- Lymph Node Biopsy
- Cysts and lump excision
- Absyys drainage
- Earlobe repair
- Piles injection
- Anal Fissure Dilation
- Rectal Polyp excision

[Back to top](#)

---

### **STAFFING:**

The Surgical floor will function from **9 AM to 8 PM** and will require the full time services of, other and medical professionals who will conduct the surgery, the following supporting staff:

1. Operating Theatre In charge and attendant
2. Head Sister
3. Two Male orderlies
4. Four Nurses
5. Operation Theatre equipment sterilization orderly

Surgeons in the fields of Gynaecology, Ophthalmology, Orthopaedic have already shown interest in operation at this Operation Theatre. It is hoped that within a short time after it commences, the s should be able to handle about 10 operations each day.

[Back to top](#)

---

### **CIVIL WORK:**

The first floor is already completely constructed. Minor alterations are required to lay it out in acc the floor plans prepared (copy attached) to convert it into a surgical floor.

[Back to top](#)

---

### **EQUIPMENT:**

**The major equipment required for this project comprises of the following:**

<b>1.</b>	Anaesthesia Machine with Hypoxic guard and circle absorber
<b>2.</b>	Double Puncture Laparoscopic system
<b>3.</b>	Hydraulic Operation & Examination Table
<b>4.</b>	Ceiling & Floor Halogen Lamps
<b>5.</b>	Pulse Oxymeter
<b>6.</b>	Full & Semi Fowler Beds
<b>7.</b>	Sterilizing equipment - fixed and portable, incl. Single Drum Autoclave
<b>8.</b>	Defibrillator Monitor with Recorder
<b>9.</b>	Solid state Surgical Cautery
<b>10.</b>	Surgical diathermy for ENT purpose
<b>11.</b>	Fibre Optic Head light with power source
<b>12.</b>	Instruments for Orthopaedic Procedures
<b>13.</b>	Instruments for ENT procedures
<b>14.</b>	Instruments for Ophthalmology procedures
<b>15.</b>	Instruments for Gynaecology procedures
<b>16.</b>	Post Operative Beds
<b>17.</b>	Bedside Lockers
<b>18.</b>	Overhead instruments Trolley
<b>19.</b>	Oxygen Gas Cylinder
<b>20.</b>	Nitrous Oxide Cylinders
<b>21.</b>	Patient Trolley
<b>22.</b>	Air-conditioning equipment
<b>23.</b>	Generating Set

A patient elevator will also be installed

[Back to top](#)

---

**FUNDING REQUIREMENT:**

It is estimated that the total outlay on equipment including the cost to complete the conversion of the floor into a s would require about USD 80,000 (Rupees 4 million).

[Back to top](#)

---

**SOME PHOTOGRAPHS OF THE FLOOR:**

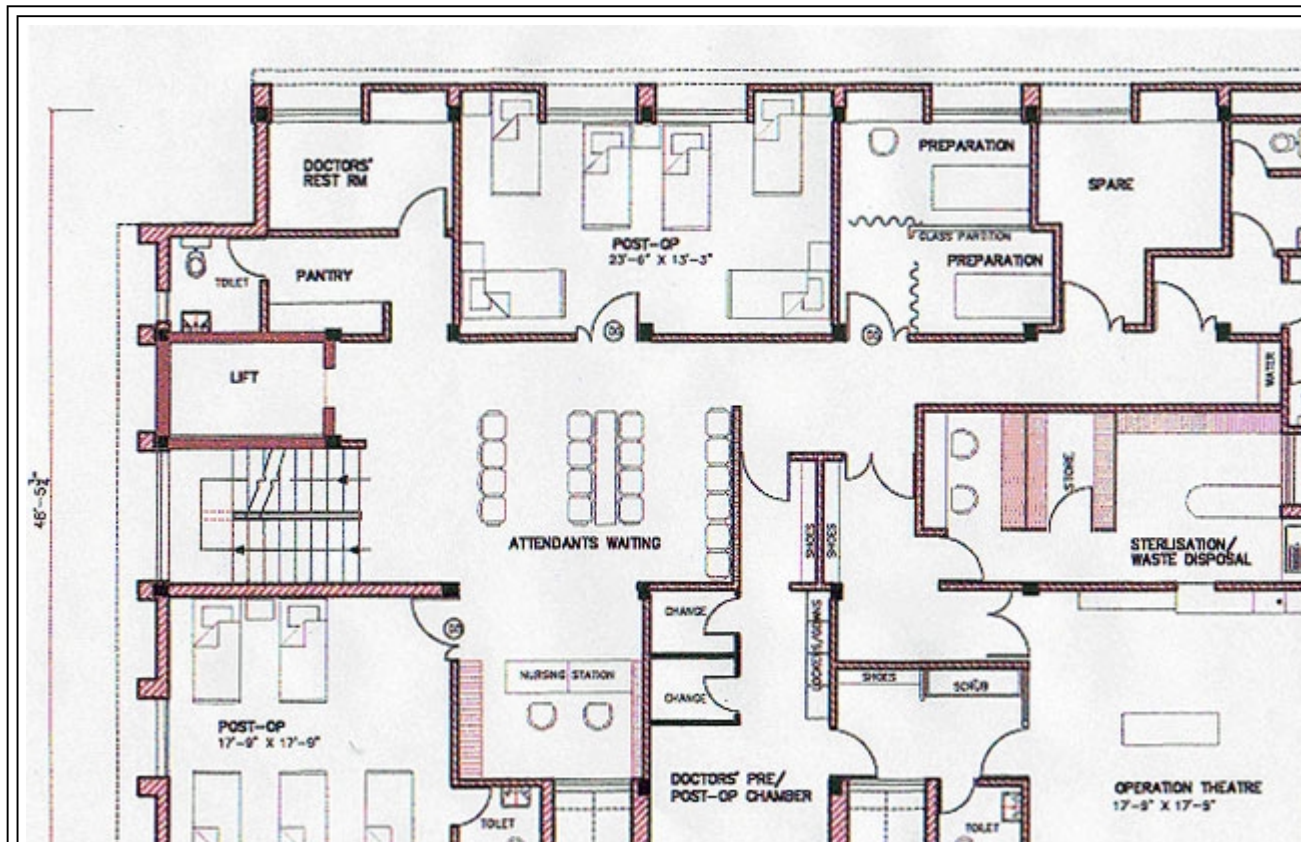


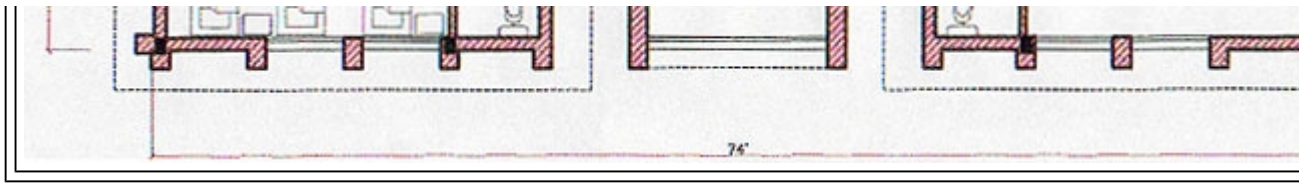




[Back to top](#)

**FLOOR PLAN**





[Back to top](#)

---